

Onboard to ECU's eduroam network – iOS Devices

Faculty, Students and Staff

Onboard (connect) to the eduroam network by authenticating with your **registered** PirateID and installing a certificate to your wireless device/s. Eduroam access must be renewed every four years.

This document will outline the **Single SSID (directly connecting to eduroam)** method for connecting to the **eduroam** network.

NOTE: iOS users must onboard using the **Safari browser**.

IMPORTANT! If you are already connected to **ecu-wifi** or your cell service, navigate to **<http://onboard.ecu.edu>**, click **“Begin Onboarding Process”**, and **SKIP TO STEP 2**.

Off Campus:

If you are attempting to onboard from a location off ECU's campus, open a browser and navigate to **<http://onboard.ecu.edu>** and click **“Begin Onboarding Process”**.

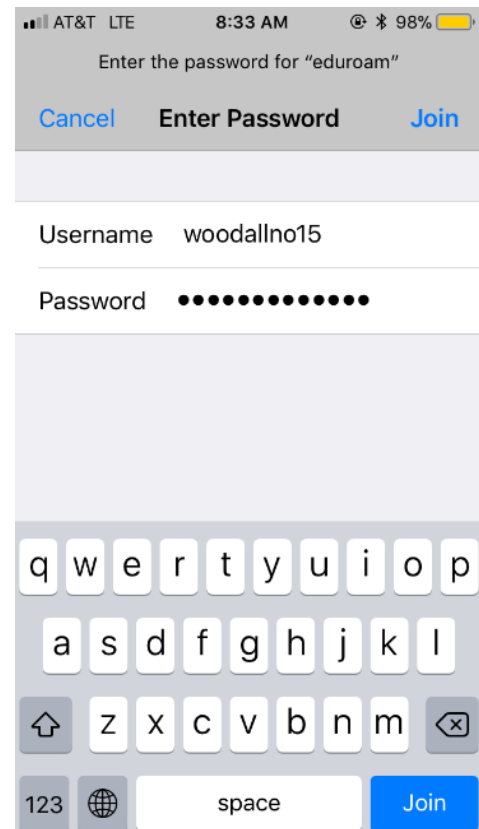
You may then proceed to step 2.

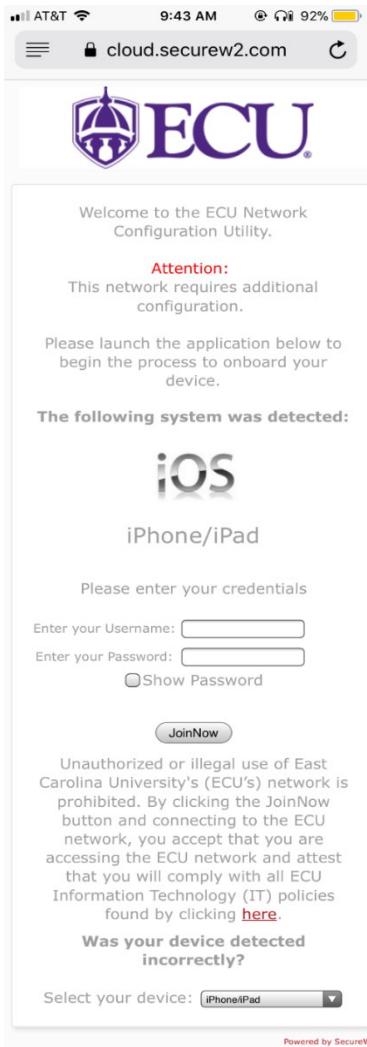
Step 1.

Open the settings app, and from the Wi-Fi menu, join the **eduroam** network using your PirateID and passphrase.

A screen should appear prompting you to trust a certificate. Click **Trust** at the top right corner of your screen.

Open your Safari web browser and navigate to **<http://www.ecu.edu>**. You should be redirected to the onboarding web portal.

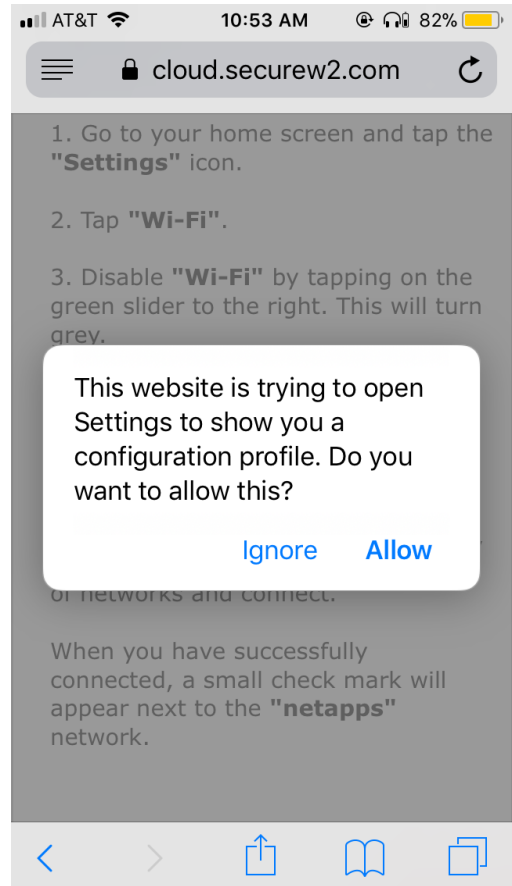


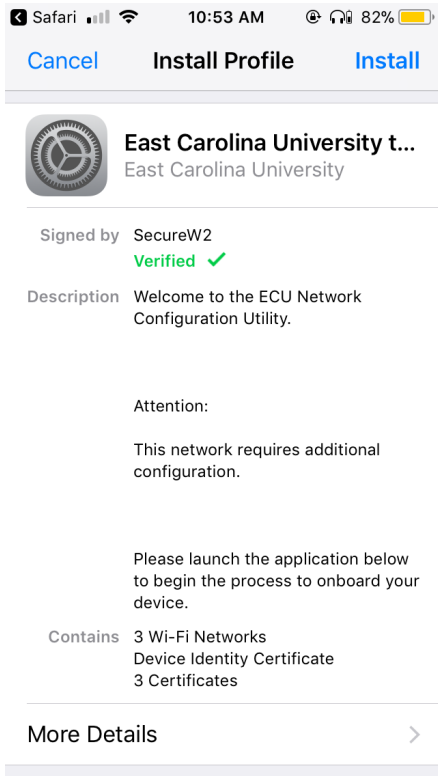


Step 2.
Enter your PirateID and passphrase, and click **JoinNow**.

Step 3.
After clicking **JoinNow**, a pop-up will appear stating that the onboard portal is attempting to open Settings to display your configuration profile.

Click **Allow**.



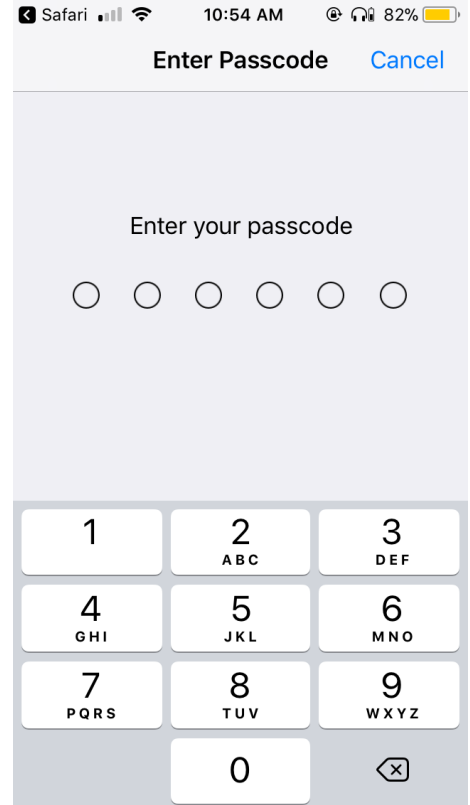


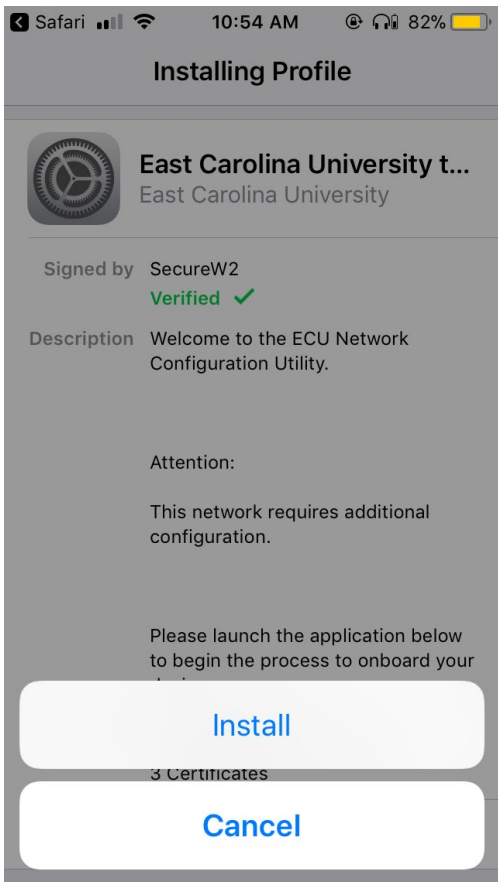
Step 4.
You should be redirected to your configuration profile in the Settings app.

Click **Install** at the top-right corner of the screen to start the installation process.

Step 5.
You will be prompted to enter your passcode or any security settings that you may use.

Enter your passcode or security settings.





Step 6.
Click **Install**.

Step 7.
After you install the configuration profile, you should be redirected back to Safari. Exit Safari and open the Settings app.

Navigate to the Wi-Fi menu, and click on **eduroam**. You should now be fully connected to the **eduroam** network.

Note: You may need to turn your WiFi off and back on in order to fully connect.

